

The use of this drawing by the recipient is an agreement of the following conditions:

1. The recipient agrees with any of the following information required to be provided to the recipient and shall not be liable for any damage or loss of any kind arising from the use of this drawing.

2. The recipient agrees to indemnify and hold the recipient harmless for any damage or loss of any kind arising from the use of this drawing.

3. The recipient agrees to indemnify and hold the recipient harmless for any damage or loss of any kind arising from the use of this drawing.

4. The recipient agrees to indemnify and hold the recipient harmless for any damage or loss of any kind arising from the use of this drawing.

5. The recipient agrees to indemnify and hold the recipient harmless for any damage or loss of any kind arising from the use of this drawing.

6. The recipient agrees to indemnify and hold the recipient harmless for any damage or loss of any kind arising from the use of this drawing.

7. The recipient agrees to indemnify and hold the recipient harmless for any damage or loss of any kind arising from the use of this drawing.

8. The recipient agrees to indemnify and hold the recipient harmless for any damage or loss of any kind arising from the use of this drawing.

9. The recipient agrees to indemnify and hold the recipient harmless for any damage or loss of any kind arising from the use of this drawing.

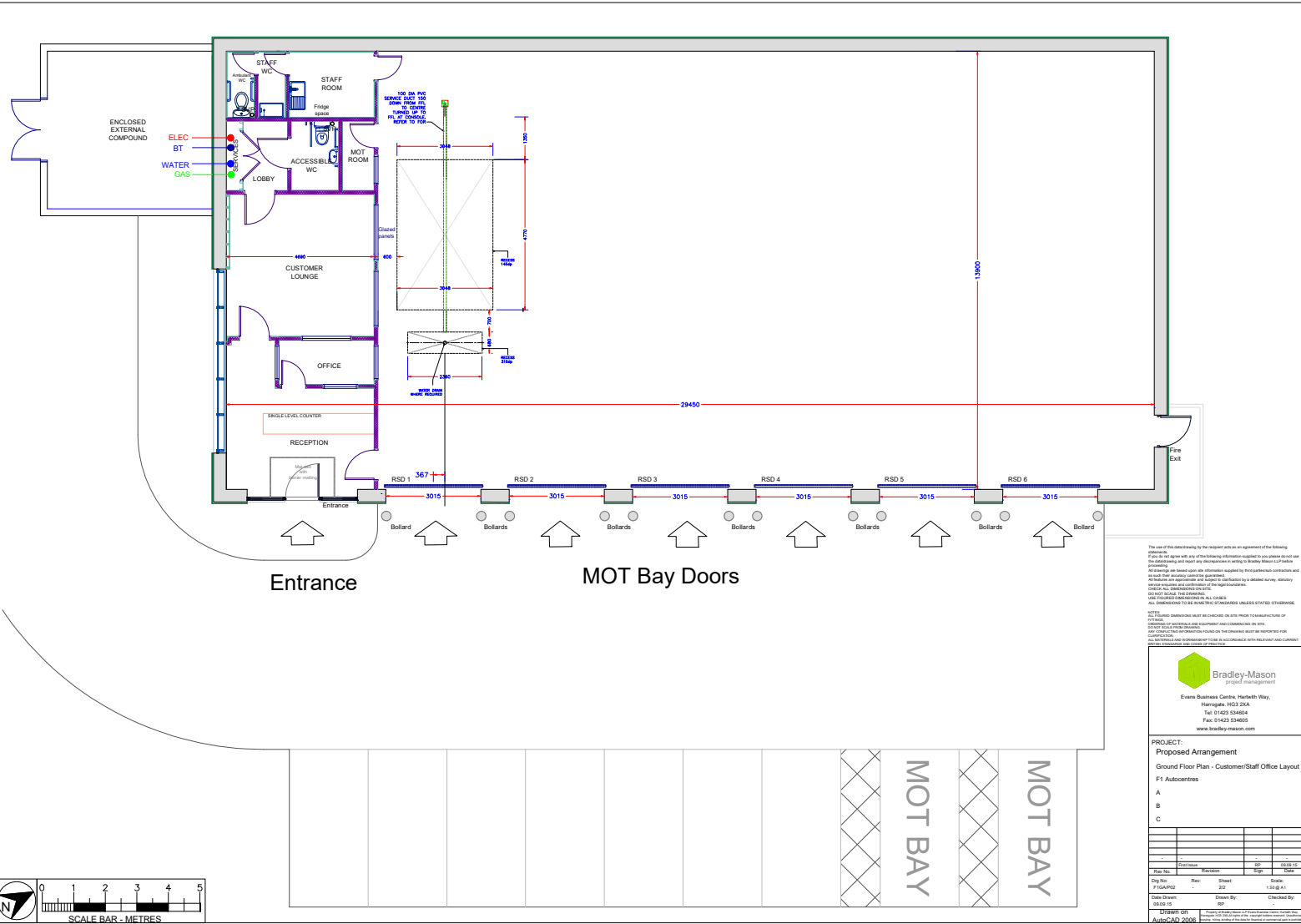
10. The recipient agrees to indemnify and hold the recipient harmless for any damage or loss of any kind arising from the use of this drawing.

Bradley-Mason
project management
Evans Business Centre, Harbath Way,
Harrington, HES 2XA
Tel: 01423 534804
Fax: 01423 534805
www.bradley-mason.com

PROJECT:
Proposed Floor Arrangement
Ground Floor Plan
F1 Autocentres
A
B
C

Rev No	Description	Rev	Date
1	Issue for Information	1	15/08/15
2	Issue for Construction	2	15/08/15
3	Issue for Construction	3	15/08/15
4	Issue for Construction	4	15/08/15
5	Issue for Construction	5	15/08/15
6	Issue for Construction	6	15/08/15
7	Issue for Construction	7	15/08/15
8	Issue for Construction	8	15/08/15
9	Issue for Construction	9	15/08/15
10	Issue for Construction	10	15/08/15

Drawn By: [Name] Date: [Date]
Checked By: [Name] Date: [Date]
Approved By: [Name] Date: [Date]



The use of this drawing by the recipient is an agreement of the following conditions:
1. The recipient agrees with any of the following conditions required to protect itself and the undersigned and accept any consequences arising from the use of this drawing.
2. The recipient agrees with any of the following conditions required to protect itself and the undersigned and accept any consequences arising from the use of this drawing.
3. The recipient agrees with any of the following conditions required to protect itself and the undersigned and accept any consequences arising from the use of this drawing.
4. The recipient agrees with any of the following conditions required to protect itself and the undersigned and accept any consequences arising from the use of this drawing.
5. The recipient agrees with any of the following conditions required to protect itself and the undersigned and accept any consequences arising from the use of this drawing.
6. The recipient agrees with any of the following conditions required to protect itself and the undersigned and accept any consequences arising from the use of this drawing.
7. The recipient agrees with any of the following conditions required to protect itself and the undersigned and accept any consequences arising from the use of this drawing.
8. The recipient agrees with any of the following conditions required to protect itself and the undersigned and accept any consequences arising from the use of this drawing.
9. The recipient agrees with any of the following conditions required to protect itself and the undersigned and accept any consequences arising from the use of this drawing.
10. The recipient agrees with any of the following conditions required to protect itself and the undersigned and accept any consequences arising from the use of this drawing.

**Bradley-Mason**
project management
Evans Business Centre, Harbath Way,
Harrington, HES 2XA
Tel: 01423 534854
Fax: 01423 534855
www.bradley-mason.com

PROJECT:
Proposed Arrangement
Ground Floor Plan - Customer/Staff Office Layout
F1 Autocentres
A
B
C

Rev No	Description	Rev	Date
1	Issue for Approval	1	13/08/15
2	Issue for Construction	2	13/08/15

Drawn By: [Name]
Checkd By: [Name]
Date Drawn: 13/08/15
Scale: 1:100
AutoCAD 2009























